



DIVINE MERCY COLLEGE

ANNUAL REPORT

2023



In 2023, Divine Mercy College continued to exemplify a commitment to excellence and compassion in education. This year was marked by remarkable academic achievements and vibrant community engagement, demonstrating the effectiveness of our innovative teaching methods. The dedication of our staff and the enthusiasm of our students have combined to make this year one of significant growth and meaningful impact, embodying our core mission is to instil faith, education, service and personal development.

OUR SCHOOL

OUR ESTABLISHMENT

Founded in 2004 by Mr. and Mrs. Zydek, Divine Mercy College began its journey with a modest cohort of students, deeply rooted in the values of the Catholic faith. As we approach the milestone of 26 years, we proudly commence the 2024 school year with approximately 350 students, guided by our motto, "Jesus, I trust in You." Over the years, the college has grown not only in size but also in spiritual and academic stature, providing a comprehensive and dynamic educational experience steeped in Catholic teachings. This growth reflects our enduring commitment to excellence in education, infused with faith, and the foundational values instilled by Mr. and Mrs. Zydek. Each year, Divine Mercy College continues to build on its legacy, preparing students to become thoughtful, capable, and responsible global citizens, anchored in their faith.



OUR MOTTO

Jesus, I Trust in You.

OUR MISSIONS

To instil faith, education, service and personal development.

OUR VISIONS

Faith, Education, Wellbeing



OUR GOVERNANCE

The School Board of Divine Mercy College is integral to the school's ongoing success and adherence to its mission, contributing significantly through expert governance and visionary leadership.

ABOUT DMC SCHOOL BOARD

Divine Mercy College's School Board plays a pivotal role in the governance and strategic direction of our institution. Comprised of dedicated members from diverse backgrounds, including education professionals, business leaders, and community representatives, the board is committed to upholding the school's Catholic ethos and educational excellence. Throughout the year, the board meets regularly to make decisions that ensure the sustainability and progression of the college. Their contributions are instrumental in shaping policies that enhance the learning environment, foster academic and spiritual growth, and secure the future success of our students. The board's steadfast dedication and insightful leadership continue to propel Divine Mercy College toward achieving its mission and vision.

The Board consists of the following members:

- **Mr. Dariusz Kwiatkowski (Chair)**
- **Mrs Sofia Campbell (Secretary)**
- **Mrs. Irena Zydek (Treasurer)**
- **Mr. Adam Zydek (Member)**
- **Mrs Anna Tong (Member)**

The College is a member of AISWA.



PRINCIPAL'S MESSAGE

As we close another year of growth and learning, we reflect on our journey with immense gratitude and a renewed sense of purpose. In alignment with our cherished motto, "Jesus, I Trust in You," we have endeavoured to embody the teachings of Christ in every aspect of our educational offerings and community interactions. Our annual report is not merely a summary of achievements but a testament to our faith-driven mission to provide a safe, nurturing, and spiritually enriching environment for all our students.

This year, Divine Mercy College has continued to excel academically. I am thrilled to report that every single year group and component in NAPLAN scored above the national average. This is a testament to the high-quality learning experiences provided by our highly qualified and motivated staff. Our educators have tirelessly worked to challenge and motivate our students, inspiring them to achieve their very best.

Our commitment to the holistic development of our students is unwavering. This year, 90% of our parents expressed satisfaction with various aspects of our school, from academic offerings to extracurricular engagement. Additionally, we maintained a commendable attendance rate of 90%, which reflects our students' eagerness to learn and participate in school activities.

Understanding the pressures faced by today's youth, we have enhanced our focus on mental health and well-being. Recognizing the increased levels of stress and mental health issues among students, we have employed an on-site school psychologist. This initiative has significantly improved the speed and efficiency of diagnosis and referral processes, ensuring that our students receive timely and effective support.

Academically, we have much to celebrate. Our students achieved a 98% WACE Achievement rate and a 100% VET completion rate. These outstanding results not only highlight the dedication of our students but also the effectiveness of our curriculum and the support provided by our staff.

As we move forward, we will continue to foster an environment where students are encouraged to contribute positively to our school and the wider community. They are not only learners but also creators of their future and the future of our society. We remain committed to nurturing their talents, supporting their dreams, and providing them with opportunities to grow as faith-filled, respectful, and responsible individuals.

I extend my heartfelt thanks to all staff, students, and parents for your continued support and commitment to making Divine Mercy College a place of excellence. Together, we celebrate the achievements of this past year and look forward with enthusiasm to the opportunities that lie ahead.

Mr. Adam Zydek
School Principal



OUR STAFF

Type of Staff	Admin	Teaching	Education Assistants	Non-Teaching	Total
Male	2	8	0	1	11
Female	2	24	6	8	40
Total	4	32	6	9	51

Teacher Standards and Qualifications

All teaching staff have current registration with the Teachers' Registration Board of Western Australia (TRBWA).

Teacher Qualifications:

- Doctoral: 4
- Masters: 2
- Bachelor Degree: 24
- Graduate Diploma: 2

Executive Team

The 2023 Executive Team consisted of the following staff:

- Mr Adam Zydek (Principal)
- Mrs Yan Lau (Registration Officer)
- Mrs Irena Zydek (Bursar)
- Ms Celestine Landers (Head of Secondary)
- Mrs Sunchi Seimeier (EALD Coordinator)
- Mrs Eulene Marillier (Primary Coordinator)
- Mrs Sheryl Palazzo (ELC Coordinator)
- Dr Wing Lau (VET Coordinator)



Staff Retention

The Proportion of staff retained from 2022 to 2023 was 95%



OUR STUDENTS

AT SCHOOL IN 2023

Year	Male	Female	Students with Disabilities	Total
Kindy	6	9	0	15
Pre-Primary	7	7	2	14
Year 1	13	9	4	22
Year 2	14	12	3	26
Year 3	13	10	2	23
Year 4	14	6	3	20
Year 5	11	14	6	25
Year 6	13	13	3	26
Year 7	13	20	5	33
Year 8	13	16	3	29
Year 9	20	12	3	32
Year 10	17	19	3	36
Year 11	14	15	3	29
Year 12	13	15	2	28
Total	181	177	43	358

STUDENT ATTENDANCE

Kindy	89%
Pre-Primary	90%
Year 1	92%
Year 2	94%
Year 3	93%
Year 5	93%
Year 6	91%

Year 7	91%
Year 8	92%
Year 9	91%
Year 10	90%
Year 11	88%
Year 12	84%

The average student attendance in 2023 was 91%

OUR STUDENTS

MANAGEMENT OF NON-ATTENDANCE

At Divine Mercy College, we place a high priority on student attendance, recognizing its critical role in educational success. We maintain a stringent attendance policy to ensure students maximize their learning opportunities. Attendance is tracked meticulously using the XUNO attendance system; Kindergarten through Year 10 students are marked present both in the morning and afternoon by their class teachers, while Year 11 and 12 students are checked each period by their subject teachers.

If a student's attendance falls below 90%, the class teacher will reach out to the parents to discuss strategies for improvement. A drop below 80% triggers more formal interventions: an official letter from the school underscores the importance of attendance, and a meeting is scheduled involving the homeroom teacher, Year Coordinator, and the parents.

Additionally, the administration office sends daily absentee SMS notifications to parents when students are absent without a prior note, ensuring all parties are informed and can respond promptly to address the issue.

RETENTION RATE

Primary School

Calendar Year	Academic Year	2023 Census	Retention Rate%
2021	4	20	130%
2023	6	26	

Secondary School

Calendar Year	Academic Year	2023 Census	Retention Rate%
2021	7	36	89%
2023	9	32	

Senior School

Calendar Year	Academic Year	2023 Census	Retention Rate%
2021	10	34	82%
2023	12	28	



OUR CURRICULUM

OUR CURRICULUM

At Divine Mercy College, we are dedicated to providing a comprehensive and progressive curriculum that spans from Kindergarten to Year 12. Our curriculum is meticulously designed to adhere to the published requirements and timelines outlined in the Western Curriculum and Assessment Outline, ensuring alignment with educational standards and benchmarks. We prioritize offering a seamless and coherent educational journey for all students, catering to their diverse needs and abilities.

Central to our curriculum are the core elements of the protective behaviour plan, drug education, mental health, and online safety. These vital components are seamlessly integrated into our academic programs to support the holistic development of our students, nurturing them into well-rounded, informed, and resilient individuals equipped to navigate the complexities of the modern world.

Furthermore, we uphold the principles of holistic and inclusive education, championing the belief that every student deserves access to quality learning opportunities. Students with disabilities are fully included in regular classes whenever possible, fostering an inclusive environment where diversity is celebrated. For those who require specialized support, we provide tailored assistance through education support classes, ensuring that every student receives the individualized attention and resources they need to thrive academically and personally.

ASSESSMENT AND REPORTING

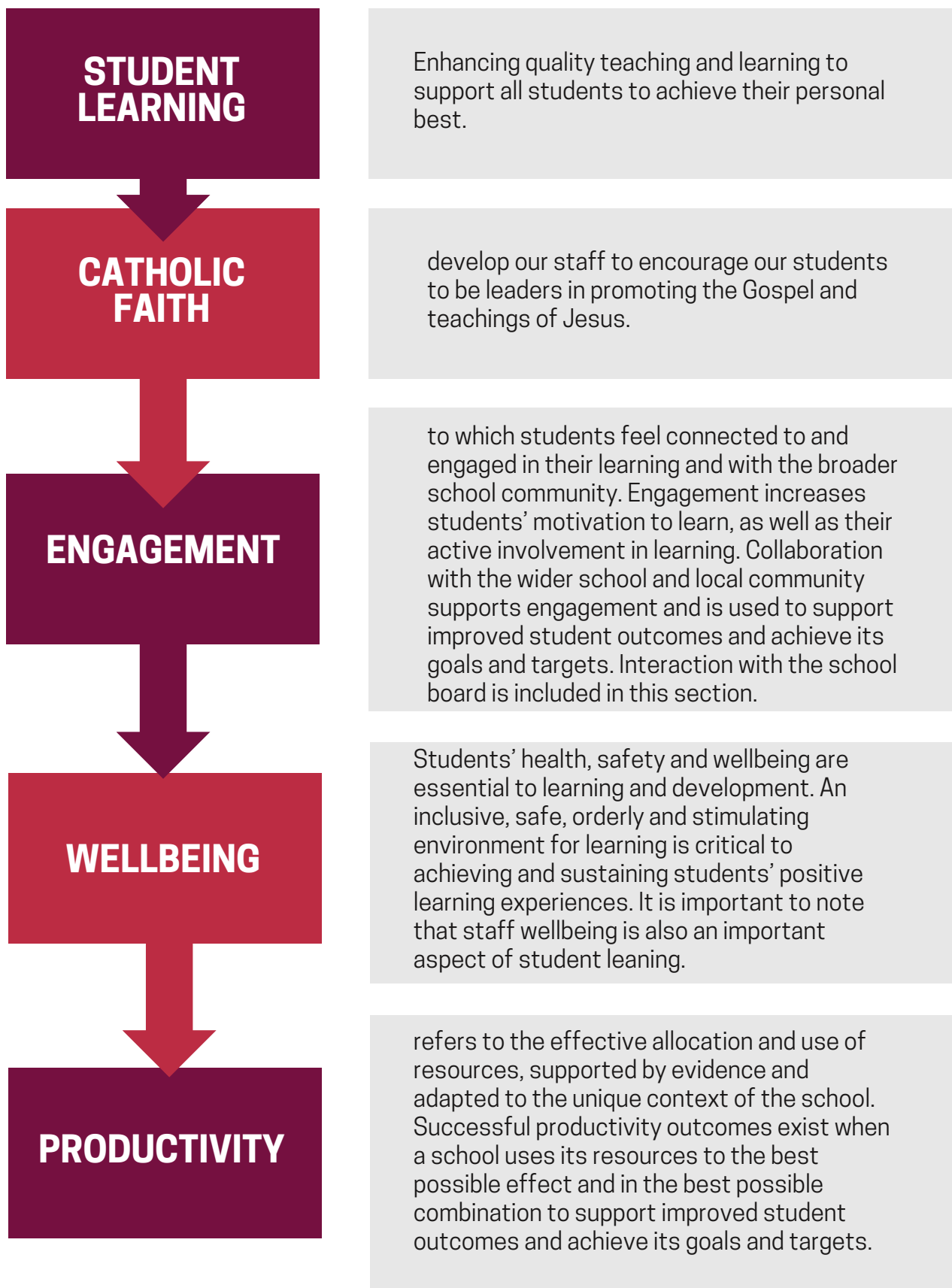
In line with our commitment to continuously enhance the educational experience for our students, Divine Mercy College has embraced a modern approach to assessment and reporting. Recognizing the value of ongoing feedback in driving student progress and engagement, our teachers have transitioned from traditional end-of-semester summative reports to providing regular, timely feedback through digital platforms such as Seesaw and XUNO portals. This shift allows for a more dynamic and personalized assessment process, enabling students to receive feedback on their work in real-time and empowering them to take an active role in their learning journey.



OUR PRIORITIES 2020 - 2023

A school's strategic direction is defined by school outcomes for improvement in the five focus areas, and key improvement strategies to achieve these outcomes.

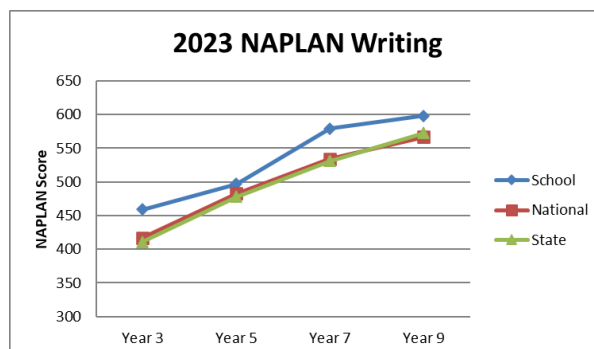
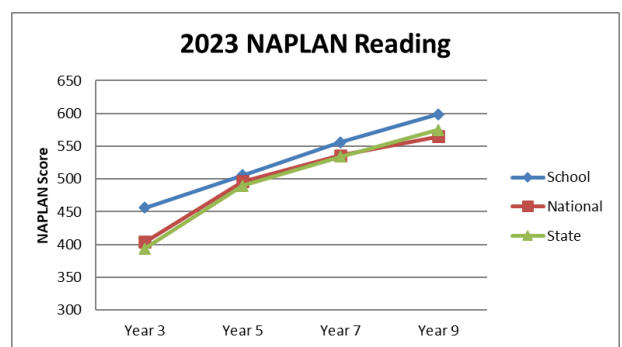
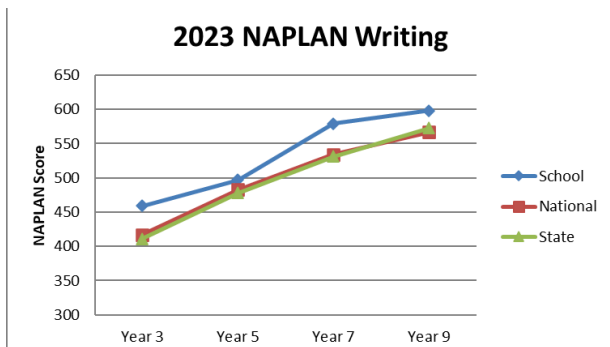
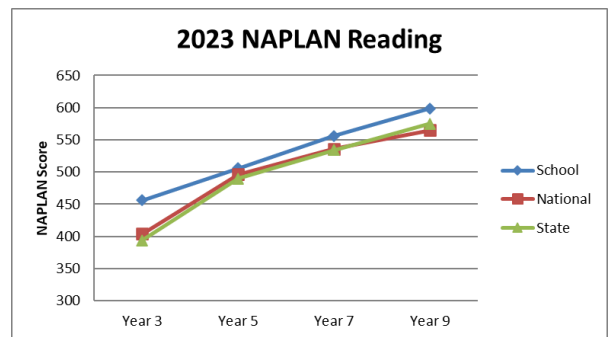
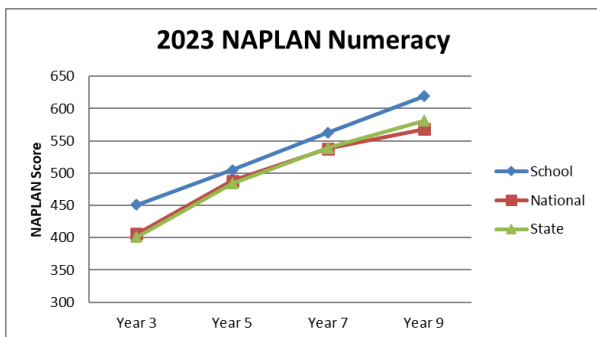
The five focus areas for Divine Mercy College are:



OUR ACHIEVEMENT

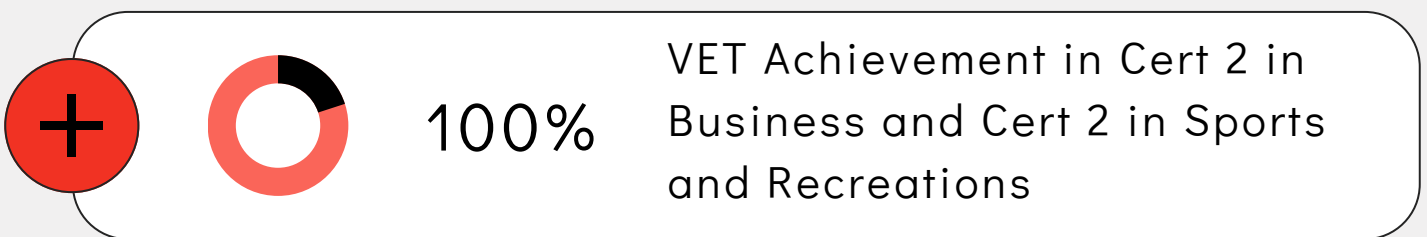
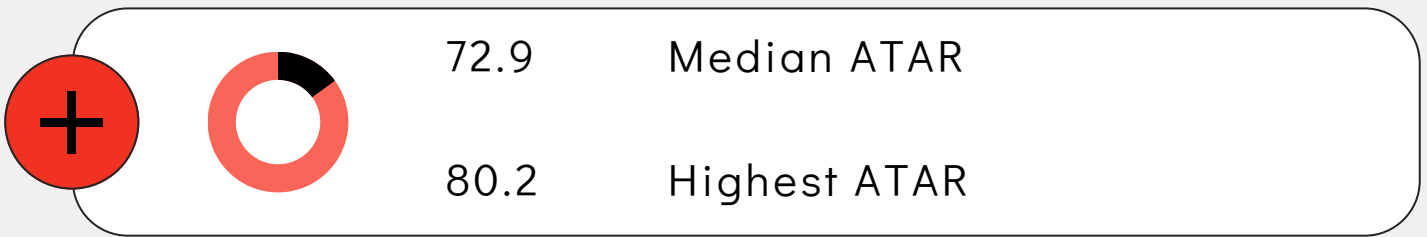
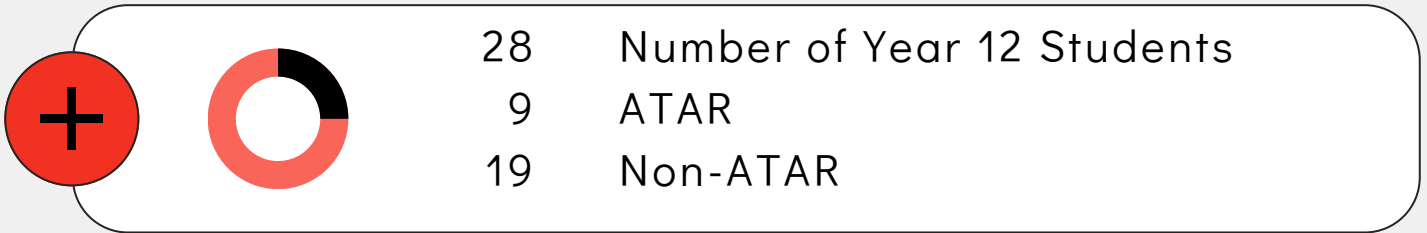
NAPLAN 2023

In 2023, Divine Mercy College celebrated outstanding achievements in the NAPLAN assessments, with results surpassing both national and state averages across all year groups and components. This remarkable accomplishment is a testament to the dedication and hard work of our students, teachers, and the broader school community. Through a commitment to academic excellence and innovative teaching practices, Divine Mercy College has consistently empowered students to reach their full potential and excel in their learning journey. These exceptional NAPLAN results not only reflect the strength of our educational programs but also highlight our unwavering commitment to providing students with the skills and knowledge they need to succeed in their academic pursuits and beyond.





SNIOR ACHIEVEMENT

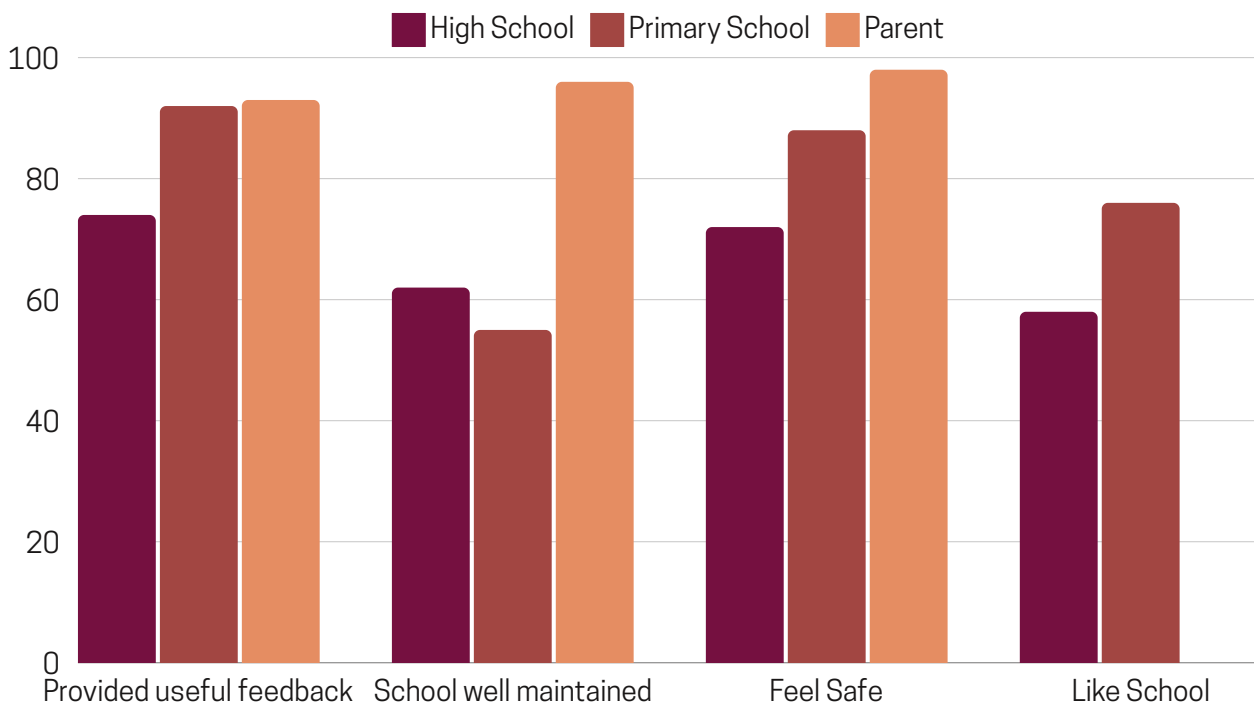


POST-SECONDARY PATHWAYS

	Curtin	ECU	Murdoch	NDU	UWA	Total
Number of students with a 1st preference (includes students without an ATAR)	13	0	0	4	2	19

COMMUNITY SATISFACTION

Each year, Divine Mercy College conducts a comprehensive survey involving our primary and high school students, as well as their parents, to gather valuable feedback on various aspects of our school environment. The focus of the survey includes evaluating whether teachers provide useful feedback, assessing feelings of safety at school, gauging enjoyment of the school experience, and determining perceptions of the school's maintenance. The results from this year's survey are exceptionally positive, indicating a high level of satisfaction among both students and parents. Notably, more than 70% of students and over 90% of parents reported feeling that our school is a safe and secure place for learning and development. These results affirm our commitment to maintaining a nurturing and supportive educational environment at Divine Mercy College.



One particularly valuable piece of feedback from our students highlighted a desire for more engaging and varied opportunities within the school curriculum. Taking this suggestion to heart, Divine Mercy College has incorporated it into our new strategic plan. A key element of this long-term planning involves the construction of a new learning hub designed to enrich our educational offerings. This modern facility will introduce hands-on subjects such as woodwork and home economics, expanding our curriculum to include more practical, skills-based learning opportunities. This development is aimed at not only enhancing student engagement but also at equipping our students with a broader range of skills and interests, preparing them for diverse futures.



OUR AWARDS

ICAS

International Competition and Assessments for Schools (ICAS) ICAS is an academic competition that challenges students and recognises their achievements in core subjects such as English, Maths and Science. The competition was started over 40 years ago and has since become an internationally-recognised annual event completed across 41 countries. The questions are engaging, fun, and written in a way that is entirely different to regular school assessments, aiming to test students' higher-order thinking and problem-solving abilities.

Students are awarded certificates on the following achievements:

Gold Medal: Top Achiever in the State

High Distinction: Top 1%

Distinction : Next 10%

Credit: Next 25%

Merit: Next 10%

English

Year 3- Alexis Thunder- Credit

Year 4- Obatayo Oluwadorotimi – High Distinction

Year 5- Ryan Mehta- Credit

Year 6 – Danya Denny – Credit

Year 7 – Amalia Ortiz-Dote – High Distinction

Year 8 – Keira Serrano – Credit

Year 9 – Hezekiah Caspe – Credit

Year 10 – Patrick Dalisay – Gold Medal

Writing

Year 3 – Elena Hayes – Credit

Year 4 – Zavannah Flores – Distinction

Year 5 – Sasha Magale – Credit

Year 6 – Uzziel Masaredo – Credit

Year 7 – Isabel Ortiz-Dote – Credit

Year 8 – Renmar Batinga – Credit

Year 9 – Theodora Berbece – Distinction

Year 10 – Patrick Dalisay – Gold Medal

Maths

Year 3 – Maks Gabriel – Credit

Year 4 – Jacob Thomas – Credit

Year 5 – Ryan Mehta – Credit

Year 6 – Jerry Zhang – Credit

Year 7 – Samantha Gomes – Credit

Year 8 – Bibix Thapa – Credit

Year 9 – Cassandra Gomes – Credit

Year 10 – Patrick Dalisay – Gold Medal

OUR AWARDS

Geography Competition

We also participated in the Geography Competition held by The Geography Association of WA. All our students received a certificate for participating.

Year 12

Damien Li – Merit
Maselino Tufuga – Merit
Pauleen Samong – Merit
Jasmine Alovera – Merit
Elize Loreto – Merit

Year 11

Minoli Abeysekera - Credit
Von Bacala - Credit
Danica Bilba – Credit
Ruben Bassilio - Credit
McClarrenz Regidor – Credit
Lara Danilovic – Credit
Levi Tordesilas – Credit
Krystel Mayor – Credit
Patience Tumbare – Credit
Lydia Chipadza - Credit

Year 10

Patrick Dalisay – Distinction
Ilya Mehta – Distinction
Vrinda Yarramreddy – Distinction

Year 9

Theodora Berbece – Credit
Errol Pangan – Credit
Cassandra Gomes – Credit
Drahcir Alicante - Merit

Year 8

Keira Serrano – Credit
Kim Nunesca – Credit
Bibix Thapa – Merit
Renmar Batinga – Merit

Year 7

Isabel Ortiz-Dote – Merit
Amelia Ortiz-Dote – Merit
Samantha Gomes – Merit

OUR CARE



DIVINE MERCY CHARITY PROJECTS

At Divine Mercy College, our commitment to charity is deeply rooted in Christian teachings that emphasize serving God and embracing a charitable spirit. In alignment with these values, we dedicate 3% of all school fees directly to our international charity projects, with a focus on making a significant impact in countries such as Vietnam and India. This initiative not only reflects our dedication to global stewardship but also instills a sense of social responsibility in our students. Additionally, the school supplements these contributions with specific donations to further support and enhance the scope of these projects. Through these efforts, Divine Mercy College actively extends its educational mission beyond our classrooms, fostering a culture of generosity and service among our community.

DISTRIBUTION

Nigeria (Franciscan Friars of the immaculate)	\$20,285.19
India (Matrix Charity)	\$31,000.00
Vietnam (Tran Tan Viet)	\$12,042.36
Amurri Divine Mercy Foundation	\$15,000.00
Total Distribution	\$78,327.55



OUR FINANCE

Divine Mercy College has been funded from the following measures:

	Total \$	Per Student \$
Australian Government Recurrent Funding	3,938,698	11,584.41
State/ Territory Government Recurrent Funding	918,473	2,701.39
Fees, Charge and Parent Contributions	921,807	2,711.20
Other Private Sources	320,041	941.30
Total	6,099,019	17,938.29





PREPARED BY :

Adam Zydek, Yan Lau



Divine Mercy College 2023